



City of Glendale – Welcome Packet

Welcome to Southland Disposal Company! We are proud to have been designated as the exclusive provider of solid waste, recycling, and organics collection services for businesses and multi-family premises of five or more units in Zone A.

Southland Disposal is family owned and operated with experience in the waste and recycling industry that extends over 100 years. We have provided high quality and dependable waste collection and recycling services to the businesses in the City of Glendale for over 50 years. Our goal is to deliver safe and reliable services at the lowest possible cost. With over 100 years of experience, we are committed to continually finding better ways to serve our customers.

This welcome packet includes useful information about the solid waste and recycling services available to you and other information about the services you may receive.

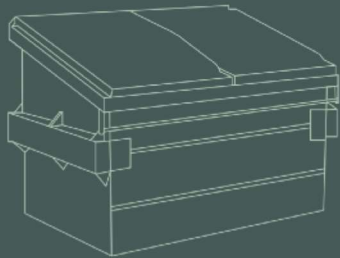
- Service Guide,
- Recycling Guide,
- Schedule of City Approved Rates,
- It's the Law Flyer (English, Armenian, Spanish),
- Notice of Implementation,
- Letter to HOA/Property Owner/Manager (February 1, 2022), and
- Exemption Application

To learn more about Southland Disposal Company or any of the subjects covered in this Welcome Packet, you may contact us by calling our customer service center, sending us an email, or visiting our website.

Customer Service Center: 323-780-7150

Email: custserv@southlanddisposal.com

Website: www.southlanddisposal.com



Waste Collection and
Recycling Service Guide

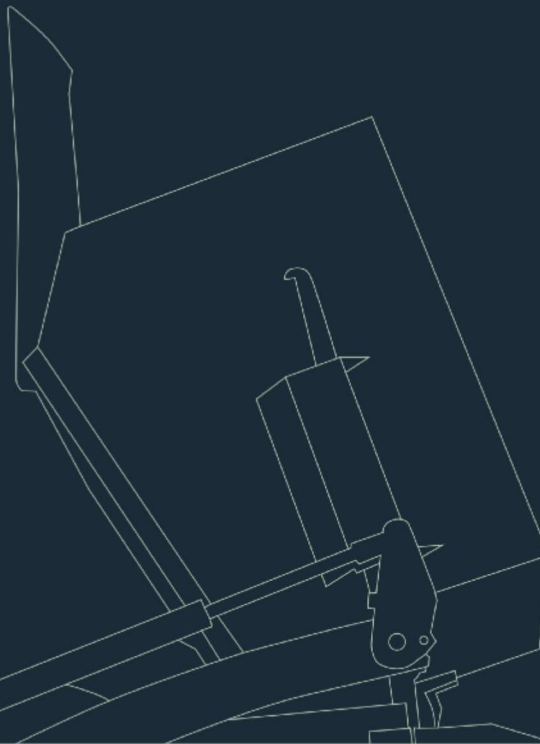
Businesses & Multi-Family

Premises of Five or More Units

City of Glendale, CA



Waste & Recycling Collection Services



Beginning January 1, 2022, State law and by City regulations require all businesses and multi-family properties with five or more units are required to subscribe to trash, recycling, and organics waste collection service unless granted a waiver or exemption by the City.

Collection services must include at minimum a black bin for trash, a blue bin for recyclable materials, and a green bin for organic waste with a minimum collection of at least once a week.

Collection Schedule

Southland Disposal Company provides collection services Monday through Saturday from 7:00 am to 6:00 pm. Your collection service day(s) will be arranged when you first subscribe for service.

Holiday Schedule

Waste collection does not occur on the following holidays:

- ▶ New Years' Day
- ▶ Martin Luther King Jr. Day
- ▶ Memorial Day
- ▶ Labor Day
- ▶ Independence Day
- ▶ Thanksgiving Day, and
- ▶ Christmas Day

When a holiday falls on a weekday, collection will be delayed by one day for the remainder of the week. If a holiday falls on Saturday or Sunday, there will be no delay in service provided customer premises are accessible, in which case, collection may be delayed until the following weekday.



Customer Service Hours:

Monday – Saturday
7:00 am – 5:00 pm



323-780-7150



SouthlandDisposal.com/Glendale



info@southlanddisposal.com

P.O. BOX 1525
Los Angeles, CA 90063

Right-Sizing Your Service

Call us to arrange a site visit with a zero-waste specialist who will assist you in “right sizing” your collection service and minimizing your total collection costs based on the type of waste generated on your premises. Increasing your participation in blue bin and organic waste recycling and downsizing your trash bin size or collection frequency will minimize your total collection costs.

What if My Business Doesn't Generate Organic Waste or I don't have Space?

A surprising amount of your trash qualifies as organic waste, such as food scraps, napkins, and paper towels. However, if you believe organic material makes up a trace amount of your weekly waste or that your business lacks the space for additional containers, you may try the following alternative solutions.

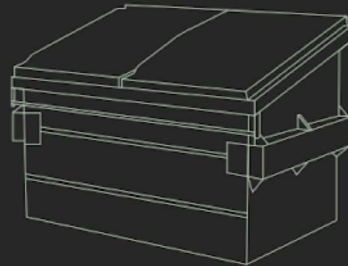
- ▶ Donate organics to a community compost program
- ▶ Compost on-site or at a community compost program)
- ▶ Self-haul to a community compost program or to an organics processing facility
- ▶ Reduce or eliminate organic waste

If no alternative is feasible, mandatory recycling and organic waste collection may be waived subject to City approval. Applications are available at Southlanddisposal.com or you may request one by emailing info@southlanddisposal.com or calling our customer service center.

Trash

Black Container: For Non-Recyclable Trash Only

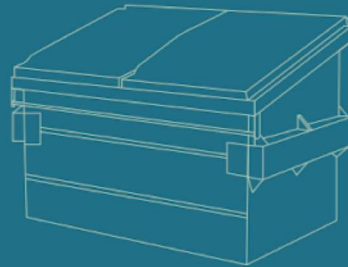
- ▶ Paper or boxes with grease or food residue
- ▶ Broken glass and dishes
- ▶ Plastic cups, lids, utensils, straws, shrink/cling wrap
- ▶ Kitty litter, diapers, bagged pet waste
- ▶ Shoes, clothing/fabric, accessories
- ▶ Treated wood and wood products



Recycling

Blue Container: For traditional recyclables

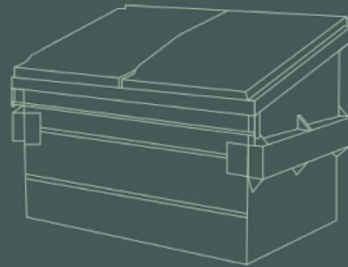
- ▶ Plastic containers, bottles, tubs, jars, clear plastic film bags
- ▶ Newspaper, magazines, phone books, envelopes, clean white and colored paper, mixed paper.
- ▶ Aluminum, tin, metal, bi-metal cans, metal hangers
- ▶ Glass bottles, jars
- ▶ Milk, juice, soup cartons
- ▶ Cardboard and paperboard (cereal boxes)
- ▶ Recyclables must be clean, dry, and loose.



Organic Waste

Green Container: For yard waste and other organic materials

- ▶ Fruits, vegetables, grains, eggshells
- ▶ Bread, cheese & pastries
- ▶ Coffee grounds, used filters and tea bags
- ▶ Grass, leaves, small branches, untreated clean wood scraps.
- ▶ Food contaminated paper
- ▶ Food waste must be bagged in clear or translucent green bags.



The Following Items May not Be Placed in Containers

- Electronic waste (items with an electrical cord, large appliances)
- Tires
- Construction & demolition waste (concrete, wood, asphalt)
- Hot ashes
- Hazardous materials
- Batteries, thermometers, fluorescent light tubes/bulbs
- Pharmaceuticals/over-the-counter medicine, sharps, medical waste
- Paint, used motor oil, solvents, pesticides

State law prohibits the disposal of hazardous waste and certain electronic waste in your containers.

Customer Responsibilities

Owners, property managers, or HOAs are responsible for arranging for waste and recycling services at their premises and for instructing their tenants regarding service needs and recycling program requirements. Tenants of multi-family residential premises should contact property management regarding their waste and recycling services. Tenants may not set up individual accounts.

Every business and multi-family premises of five or more units is required to



▶ Subscribe to Weekly Collection Service

Customers are required to provide Containers of sufficient size, type, and quantity to ensure that all solid waste is properly stored and contained until removed for disposal or processing at minimum once a week.



▶ Provide Full Access to Containers on Collection Day(s)

Southland collection crew must be given full access to containers on the designated collection day(s). Southland Disposal cannot remove obstructions to access containers. Customers whose bins require relocating to position for access to collection vehicles, may subscribe to bin roll out service or scout service.



▶ Provide Color-Coded Bins

Customers must provide clearly labeled or color-coded waste bins in all indoor and outdoor areas where waste is collected.



▶ Provide Recycling Program Information

Provide information, annually, to employees, tenants, contractors, and customers about what materials belong in each container, and to all new tenants before or within 14 days of move-in.



▶ Avoid Container Contamination

Placing materials in the correct container ensures reduction in landfill disposal and helps reduce program costs. Contamination occurs when items are placed into the wrong containers. For example, placing a glass bottle into the organics container or placing food waste in the recycling container. A container is considered excessively contaminated if it contains more than 10% contamination.

Contaminated containers will be tagged with a notice indicating why the content was excessively contaminated and the recommended corrective action. Upon the third and subsequent instance of contamination, Southland Disposal may decline to collect the material and/or assess a contamination fee.



▶ Avoid Container Overfilling

A container may be considered overfilled when materials project above its rim in a manner that impedes the complete closure of its lid and/or when materials are placed outside the container and/or allowed to accumulate making access to the container unsafe for collection.

Overfilled containers will be tagged with the recommended corrective action. Upon the third and subsequent instance of overfilling, Southland Disposal may decline to collect the material.

Glendale Environmental Management Center

Free disposal of all batteries (including car batteries), cleaning products and disinfectants, paint, fluorescent lamps and tubes, automobile fluids (antifreeze, lubricating fluids, motor oil, and filters), paint and solvents, prescription medication, and over-the-counter medication, pesticides, fertilizers, and more.

Glendale Recycling Center

Free disposal of batteries (except car batteries), cell phones, computers, radios, tablets, televisions.



Other Services

Bulky Waste Pickup

Business Customers are eligible for four bulky item collections per calendar year. Each bulky item collection is limited to four large household items or up to ten (10) bundles of green waste (bundled no more than 4' long and 18" in diameter) per collection event. Bulky item collections that exceed four per calendar year or bulky times in excess of four per collection event are subject to an additional charge.

To schedule a bulky item collection, contact our Customer Service at least two days in advance of a regular collection day. For multi-family complexes, bulky item pick-ups must be scheduled by property management. Leaving bulky items on the curb, street, or on the premises without arranging for proper disposal with property management is considered illegal dumping.

Bin Wheel Out Service

Customers are responsible for properly placing out containers for collection. Customers whose bins require relocating more than ten feet to position for collection vehicle access may subscribe to bin wheel out service at an additional charge.

Scout Service

Customers whose bins that require relocating by use of an auxiliary pickup truck for collection vehicle access or customers who request such service will be provided Scout Service at an additional charge.

Bin Lock Service

Customer requiring restricted access their bins may request bin lock service at an additional charge.

Roll Off and Compactor Service

Roll off box service is available

Holiday Tree Recycling

Holiday tree collection is provided on regularly scheduled collection days to multi-family premises after December 25 and through the third Saturday in January. Holiday Trees placed for Collection must be cut into lengths no longer than six (6) feet, be free of ornaments, garlands, tinsel and flocking, and the stands must be removed.

Missed Collection

If we are at fault for a missed collection, we will provide collection within 24 hours of your notification if your call is received on a collection day.

Bin or Cart Repair/Replacement

Southland Disposal will repair or replace your containers as the result of normal wear and tear, resulting from proper use, or damage resulting from our actions at no cost to you. If a cart is broken or damaged, we will repair or replace your carts by the next regularly scheduled collection day provided that you notify us two workdays in advance of the next collection day. You may request a container replacement once per year at no additional charge.

You will be responsible for the cost of repair or replacement of containers that are damaged as a result of your negligence or misuse, including overfilling or depositing of prohibited materials.

Container Care

You may request your bin or cart to be cleaned or replaced once per year at no additional charge. You may request container cleanings or replacements more than once per year at an additional charge. We will remove graffiti from any container within two workdays of your request.

Right-Sizing Your Service

Call us to arrange a site visit with a zero-waste specialist who will assist you in "right sizing" your collection service and minimizing your total collection costs based on the type of waste generated on your premises. Increasing your participation in blue bin and organic waste recycling and downsizing your trash bin size or collection frequency will minimize your total collection costs.

What if My Business Doesn't Generate Organic Waste or I don't have Space?

A surprising amount of your trash qualifies as organic waste, such as food scraps, napkins, and paper towels. However, if you believe organic material makes up a trace amount of your weekly waste or that your business lacks the space for additional containers, you may try the following alternative solutions.

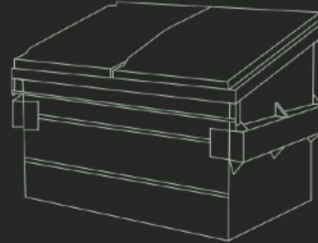
- ▶ Donate organics to a community compost program
- ▶ Compost on-site or at a community compost program)
- ▶ Self-haul to a community compost program or to an organics processing facility
- ▶ Reduce or eliminate organic waste

If no alternative is feasible, mandatory recycling and organic waste collection may be waived subject to City approval. Applications are available at Southlanddisposal.com or you may request one by emailing info@southlanddisposal.com or calling our customer service center.

Trash

Black Container: For Non-Recyclable Trash Only

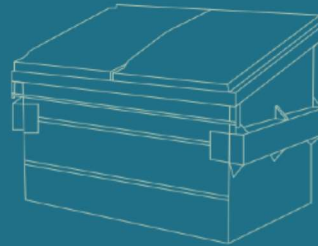
- ▶ Paper or boxes with grease or food residue
- ▶ Broken glass and dishes
- ▶ Plastic cups, lids, utensils, straws, shrink/cling wrap
- ▶ Kitty litter, diapers, bagged pet waste
- ▶ Shoes, clothing/fabric, accessories
- ▶ Treated wood and wood products



Recycling

Blue Container: For traditional recyclables

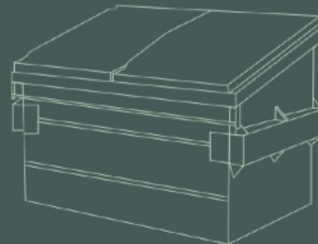
- ▶ Plastic containers, bottles, tubs, jars, clear plastic film bags
- ▶ Newspaper, magazines, phone books, envelopes, clean white and colored paper, mixed paper.
- ▶ Aluminum, tin, metal, bi-metal cans, metal hangers
- ▶ Glass bottles, jars
- ▶ Milk, juice, soup cartons
- ▶ Cardboard and paperboard (cereal boxes)
- ▶ Recyclables must be clean, dry, and loose.



Organic Waste

Green Container: For yard waste and other organic materials

- ▶ Fruits, vegetables, grains, eggshells
- ▶ Bread, cheese & pastries
- ▶ Coffee grounds, used filters and tea bags
- ▶ Grass, leaves, small branches, untreated clean wood scraps.
- ▶ Food contaminated paper
- ▶ Food waste must be bagged in clear or translucent green bags.

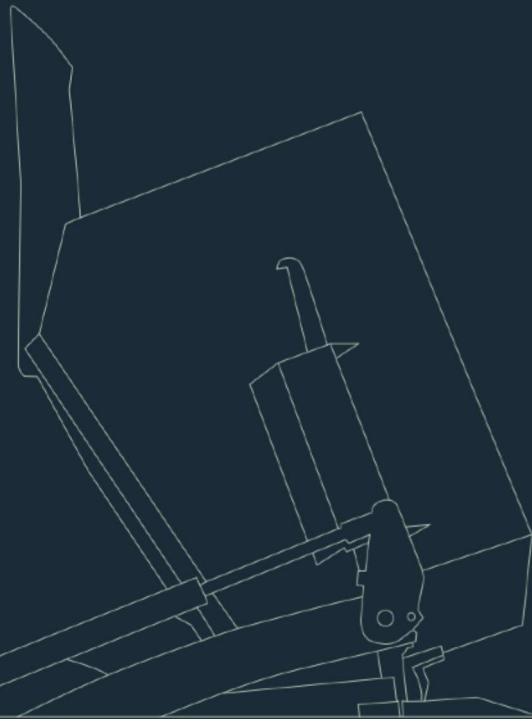


The Following Items May not Be Placed in Containers

- Electronic waste (items with an electrical cord, large appliances)
- Tires
- Construction & demolition waste (concrete, wood, asphalt)
- Hot ashes
- Hazardous materials
- Batteries, thermometers, fluorescent light tubes/bulbs
- Pharmaceuticals/over-the-counter medicine, sharps, medical waste
- Paint, used motor oil, solvents, pesticides

State law prohibits the disposal of hazardous waste and certain electronic waste in your containers.

Waste & Recycling Collection Services



Beginning January 1, 2022, State law and by City regulations require all businesses and multi-family properties with five or more units are required to subscribe to trash, recycling, and organics waste collection service unless granted a waiver or exemption by the City.

Collection services must include at minimum a black bin for trash, a blue bin for recyclable materials, and a green bin for organic waste with a minimum collection of at least once a week.

Collection Schedule

Southland Disposal Company provides collection services Monday through Saturday from 7:00 am to 6:00 pm. Your collection service day(s) will be arranged when you first subscribe for service.

Holiday Schedule

Waste collection does not occur on the following holidays:

- ▶ New Years' Day
- ▶ Martin Luther King Jr. Day
- ▶ Memorial Day
- ▶ Labor Day
- ▶ Independence Day
- ▶ Thanksgiving Day, and
- ▶ Christmas Day

When a holiday falls on a weekday, collection will be delayed by one day for the remainder of the week. If a holiday falls on Saturday or Sunday, there will be no delay in service provided customer premises are accessible, in which case, collection may be delayed until the following weekday.



Customer Service Hours:

Monday – Saturday
7:00 am – 5:00 pm

-  323-780-7150
-  [SouthlandDisposal.com/Glendale](https://www.southlanddisposal.com/Glendale)
-  info@southlanddisposal.com

P.O. BOX 1525
Los Angeles, CA 90063

Glendale Environmental Management Center

Free disposal of all batteries (including car batteries), cleaning products and disinfectants, paint, fluorescent lamps and tubes, automobile fluids (antifreeze, lubricating fluids, motor oil, and filters), paint and solvents, prescription medication, and over-the-counter medication, pesticides, fertilizers, and more.

Glendale Recycling Center

Free disposal of batteries (except car batteries), cell phones, computers, radios, tablets, televisions.



Other Services

Bulky Waste Pickup

Business Customers are eligible for four bulky item collections per calendar year. Each bulky item collection is limited to four large household items or up to ten (10) bundles of green waste (bundled no more than 4' long and 18" in diameter) per collection event. Bulky item collections that exceed four per calendar year or bulky times in excess of four per collection event are subject to an additional charge.

To schedule a bulky item collection, contact our Customer Service at least two days in advance of a regular collection day. For multi-family complexes, bulky item pick-ups must be scheduled by property management. Leaving bulky items on the curb, street, or on the premises without arranging for proper disposal with property management is considered illegal dumping.

Bin Wheel Out Service

Customers are responsible for properly placing out containers for collection. Customers whose bins require relocating more than ten feet to position for collection vehicle access may subscribe to bin wheel out service at an additional charge.

Scout Service

Customers whose bins that require relocating by use of an auxiliary pickup truck for collection vehicle access or customers who request such service will be provided Scout Service at an additional charge.

Bin Lock Service

Customer requiring restricted access their bins may request bin lock service at an additional charge.

Roll Off and Compactor Service

Roll off box service is available

Holiday Tree Recycling

Holiday tree collection is provided on regularly scheduled collection days to multi-family premises after December 25 and through the third Saturday in January. Holiday Trees placed for Collection must be cut into lengths no longer than six (6) feet, be free of ornaments, garlands, tinsel and flocking, and the stands must be removed.

Missed Collection

If we are at fault for a missed collection, we will provide collection within 24 hours of your notification if your call is received on a collection day.

Bin or Cart Repair/Replacement

Southland Disposal will repair or replace your containers as the result of normal wear and tear, resulting from proper use, or damage resulting from our actions at no cost to you. If a cart is broken or damaged, we will repair or replace your carts by the next regularly scheduled collection day provided that you notify us two workdays in advance of the next collection day. You may request a container replacement once per year at no additional charge.

You will be responsible for the cost of repair or replacement of containers that are damaged as a result of your negligence or misuse, including overfilling or depositing of prohibited materials.

Container Care

You may request your bin or cart to be cleaned or replaced once per year at no additional charge. You may request container cleanings or replacements more than once per year at an additional charge. We will remove graffiti from any container within two workdays of your request.

SB 1383 Short-Lived Climate Pollutants Reduction

SB 1383 is a statewide organic waste recycling and surplus food recovery adopted in 2022 to reduce emissions of methane from food and organic waste in landfills. Landfills are the third-largest source of the state's emissions of methane, a powerful greenhouse gas. Organics is the 2nd largest methane generator in California. The law also aims to reduce food insecurity by ensuring more surplus food reaches people in need instead of being thrown away.

SB 1383 requires the state to:

- ▶ Reduce organic waste disposal 75% by 2025.
- ▶ Rescue at least 20% of currently disposed surplus edible food by 2025.

Organic Waste Recovery

All customers are required to separate food waste and to place it in an organics waste container.

Edible Food Recovery

Each jurisdiction must implement an edible food recovery program. Commercial edible food generators such as supermarkets, food service providers, food distributors, and wholesale food vendors are classified into tier 1 and tier 2 and must participate in food recovery programs with food recovery organizations such as food banks.

This service guide provides you with information about waste and recycling collection services available to businesses and multi-family premises of five units or more in the City of Glendale, CA.

Beginning December 1, 2021, the City of Glendale adopted a franchise system for the collection of solid waste and recycling services. The City was divided into four zones with one hauler assigned to provide services to each zone. We are proud to be the exclusive provider of solid waste and recycling to all businesses and multi-family premises of five or more units in Zone A (map).

About Us

Southland Disposal Company is family owned and operated with experience in the waste and recycling industry that extends over 100 years. We have provided high quality and dependable waste collection and recycling services to the businesses in the City of Glendale for over 50 years

RECYCLING INFORMATION GUIDE

Learn more:



RECYCLABLE

PLASTICS

**Keep caps on plastic beverage containers*

- Highly Recyclable
 - Plastics number 1 as bottle or clamshell
 - Plastics numbers 2 & 5
 - Soda, juice, & water bottles
 - Beverage & detergent jugs
- Acceptable (but may not be recycled)
 - Plastics numbers 3, 4, 6, & 7
 - All black plastics
 - Plastic toys
 - Plastic bags, dry cleaning bags, cellophane, & bubble wrap
 - Small plastics (utensils, straws, loose caps, & anything less than 4 inches)



METALS

- Aluminum foil & pie tins (clean)
- Scrap metal
- Steel cans, dishware, etc.
- Tin & aluminum cans

PAPER (clean & dry)

- Envelopes
- File folders (paper only)
- Junk mail & magazines
- Newspaper
- Paper (white & mixed color)
- Paper grocery bags
- Telephone books
- Acceptable (but may not be recycled)
 - Cereal boxes (no plastic insert)
 - Egg cartons (paper only & clean)
 - Frozen food boxes
 - Soup, milk, & juice cartons



CARDBOARD (or similar)

- Cardboard & corrugated boxes
- Pizza boxes (clean sections only)

GLASS

**No window glass, porcelain, or non-food related glass. Please remove caps/lids.*

- Amber, green, & mixed-color glass
- Clear food glass jars
- Soda, tea, & liquor bottles

No Liquids or Food in Recyclables

LANDFILL

FOOD WRAPPERS/CONTAINERS

- Candy & protein bar wrappers
- Chip bags
- Disposable coffee cups & lids
- Juice & food pouches
- Bags with a mix of metal & plastic



GLASS/PORCELAIN

- Dishware
- Flower pots
- Incandescent light bulbs
- Porcelain
- Vases & glass figurines
- Window glass



PAPER

- All receipts
- Bathroom, facial tissues, & wipes
- Gift wrap with plastic or metal
- Hardback books
- Laminated or plastic coated paper
- Padded or Tyvek-type envelopes
- Photographs

PLASTICS

- All foam
- Garden hoses & plastic tarps
- Latex & plastic gloves
- Empty motor oil



MISC

- Disposable diapers
- Empty aerosol cans
- Pet waste
- Produce stickers
- Lint or unusable clothing & fabric
- All tea bags & tea bag wrappers
- Menstrual products
- Hard shells (e.g. clams, mussels, & oysters)

ORGANICS & SOILED PAPER

**Only if there is no green waste/food scrap collection. See list to right.*

- Includes all food scraps, green waste, & food-soiled paper

COMPOSTABLES

GREEN WASTE

- Grass clippings
- Flower & hedge trimmings
- Leaves & branches
- Lumber, scrap wood, & plywood types (not painted or treated)
- Weeds



FOOD SCRAPS

**Food Scraps includes putrescible matter produced from human or animal food production, preparation, & consumption activities. No produce stickers.*

- Bread, rice, & pasta
- Cheese & dairy
- Coffee filters & grounds
- Flowers & herbs
- Fruits & vegetables
- Meat, bones, poultry, seafood, & soft shells (e.g. lobster, crab, & shrimp)



FOOD-SOILED PAPER

**All items must be 100% plant-fiber based with NO petroleum based plastic, wax, or bio-plastic coating, liner, or laminate. Must be soiled ONLY with food or drink liquids. No bathroom tissue, toilet paper, or menstrual products.*

- 100% fiber based, compostable to-go containers & servingware
- Egg cartons (paper)
- Food-stained paper
- Paper napkins & kitchen towels
- Paper food boats
- Paper packaging
- Paper plates & cups
- Pizza boxes



Food scraps must be contained in see-through plastic bags.



Updated October 2021. Download this reference list and the rest of our signage and resources at southlanddisposal.com

(323) 780-7150

southlanddisposal.com



**MAXIMUM MONTHLY RATES - ADJUSTED
EFFECTIVE JULY 1, 2022**

Refuse/Organics Monthly Rates - Adjusted									
% Adjustment 6.920%		Pickups per Week							Addl Pickup
Size	CY	1	2	3	4	5	6	7	
65 Gal	0.32	\$26.41	\$52.77	\$79.17	\$105.53	\$131.94	\$158.30	\$184.65	\$26.41
96 Gal	0.48	\$28.60	\$57.20	\$85.80	\$114.40	\$143.01	\$171.61	\$200.21	\$28.60
1 Yd	1	\$144.79	\$289.58	\$434.37	\$579.16	\$723.96	\$868.75	\$1,013.54	\$144.79
1.5 Yd	1.5	\$152.03	\$304.06	\$456.09	\$608.12	\$760.16	\$912.19	\$1,064.22	\$152.03
2 Yd	2	\$159.27	\$318.54	\$477.81	\$637.08	\$796.35	\$955.62	\$1,114.89	\$159.27
3 Yd	3	\$173.75	\$347.50	\$521.25	\$695.00	\$868.75	\$1,042.49	\$1,216.25	\$173.75
4 Yd	4	\$188.23	\$376.45	\$564.69	\$752.91	\$941.14	\$1,129.37	\$1,317.60	\$188.23
5 Yd	5	\$202.71	\$405.42	\$608.12	\$810.83	\$1,013.54	\$1,216.25	\$1,418.96	\$202.71
6 Yd	6	\$217.19	\$434.37	\$651.56	\$868.75	\$1,085.93	\$1,303.12	\$1,520.31	\$217.19
Recycling Monthly Rates - Adjusted									
% Adjustment 6.920%		Pickups per Week							Addl Pickup
Size	CY	1	2	3	4	5	6	7	
65 Gal	0.32	\$13.20	\$26.39	\$39.59	\$52.77	\$65.97	\$79.15	\$92.33	\$13.20
96 Gal	0.48	\$14.31	\$28.60	\$42.91	\$57.20	\$71.51	\$85.80	\$100.11	\$14.31
1 Yd	1	\$72.40	\$144.79	\$217.19	\$289.58	\$361.98	\$434.37	\$506.77	\$72.40
1.5 Yd	1.5	\$76.02	\$152.03	\$228.05	\$304.06	\$380.08	\$456.09	\$532.11	\$76.02
2 Yd	2	\$79.63	\$159.27	\$238.90	\$318.54	\$398.18	\$477.81	\$557.45	\$79.63
3 Yd	3	\$86.87	\$173.75	\$260.63	\$347.50	\$434.37	\$521.25	\$608.12	\$86.87
4 Yd	4	\$94.11	\$188.23	\$282.34	\$376.45	\$470.58	\$564.69	\$658.80	\$94.11
5 Yd	5	\$101.35	\$202.71	\$304.06	\$405.42	\$506.77	\$608.12	\$709.48	\$101.35
6 Yd	6	\$108.60	\$217.19	\$325.79	\$434.37	\$542.97	\$651.56	\$760.16	\$108.60

		Percent Adjustment	6.920%
Extra Service	Condition Under Which Fee Applies	Current Base Rate	Adjusted Base Rate Effective July 1, 2022
Bin Wheel Out Service	Customer request – Recurring rate per Bin per weekly number of pickups	\$31.43	\$33.60
Scout Service	As required for service – Monthly rate per Bin per weekly pickup	\$56.61	\$60.53
Bin Lock Service	Customer request – Monthly rate per Bin per weekly pickup	\$16.11	\$17.22
Bin Replacement	Customer request – per request (> once per year)	\$127.86	\$136.71
Cart Replacement	Customer request – per request (> once per year)	\$127.86	\$136.71
Container cleaning/graffiti removal	Customer or City request, or as necessary to prevent a nuisance (> once per year)	\$35.00	\$37.42
Empty Roll Off Box Delivery	Customer Request – Fixed fee per occurrence	\$141.25	\$151.02
Horse Accounts	Customer request – Monthly rate		
	First horse	\$114.22	\$122.12
	each additional horse	\$81.64	\$87.29
Roll Off Pull Charge – Open top	As required for service – Rate per load		
	10-19 CY	\$281.25	\$300.71
	20-29 CY	\$281.25	\$300.71
	30-39 CY	\$281.25	\$300.71
	40+ CY	\$281.25	\$300.71
Roll Off Pull Charge – Compactor	As required for service – Rate per load		
	10-19 CY	\$370.63	\$396.28
	20-29 CY	\$370.63	\$396.28
	30-39 CY	\$370.63	\$396.28
	40+ CY	\$370.63	\$396.28
Service Renewal Fee – for Non payment	Customer Request – Per Account	\$79.97	\$85.50
Bulky Item Pickup Charge for bulky pickups in excess of four (4) per calendar year	Per Pickup	\$100.00	\$106.92
Bulky Item Unit Charge for each item in excess of four (4) items	Per Item	\$25.00	\$26.73
Tipping Fee for Regular Roll Off Collection Service	Per ton	\$80.79	\$86.38
Dry Run for Regular Roll Off Collection Service		\$150.00	\$160.38
Emergency Service – Front-loader with driver	Hourly Rate	\$200.00	\$213.84
Emergency Service – Roll Off truck with driver	Hourly Rate	\$150.00	\$160.38
Contamination Fee	Per Occurrence of Contamination (>2, according to tagging procedures in Section 6.1.5)		
	for the first occurrence;	\$50.00	\$53.46
	for any subsequent occurrence with the same 12-month period.	\$100.00	\$106.92

IT IS THE LAW...

NEW WASTE AND RECYCLING REQUIREMENTS

For Glendale Businesses and Multi-Family Properties with 5 or More Units

NEW! Organics Recycling Program

A new state law (Senate Bill 1383), which went into effect on January 1, 2022, requires businesses and residents to separate organic waste, such as food scraps and plant trimmings, from the garbage. To comply with the new law, the City of Glendale is working with its franchised haulers to implement a new Organics Recycling program.

State law and **Glendale Municipal Code 8.44.082** require Glendale businesses and multi-family residential properties to:

1

Subscribe to organics recycling service with your hauler by April 1st, 2022. Waivers are available for businesses with limited space or low volumes of waste and are available at glendaleca.gov/waiver.

- › **Contact your franchised hauler directly to set up services or schedule a free site visit to understand your container and service options.**

3

Annually, provide information to employees, tenants, contractors and customers about what materials belong in each container. New tenants must be provided with information before or within 14 days of move-in.

- › **Visit your franchised hauler's website to access free educational materials that fulfill this requirement.**

2

Provide three collection containers for residents that are clearly labeled or color-coded (Blue/Recycling, Green/Organics and Black/Trash) in all indoor and outdoor areas where waste is collected.

- › **Visit your franchised hauler's website to download free labels and posters.**

4

Provide for the recovery of edible food (for large generators of food waste only).

- › **Visit glendaleca.gov/FoodRecovery for more information.**

Hauler contact information is available at glendaleca.gov/hauler



Program Enforcement

These requirements went into effect on January 1, 2022. The city will conduct inspections to determine compliance as required by State law. If the city determines non-compliance, educational materials will be provided as well as a notice to comply. Violations may be subject to administrative civil penalties. For more information, refer to Glendale Municipal Code 8.44.180.

Who is My Hauler?

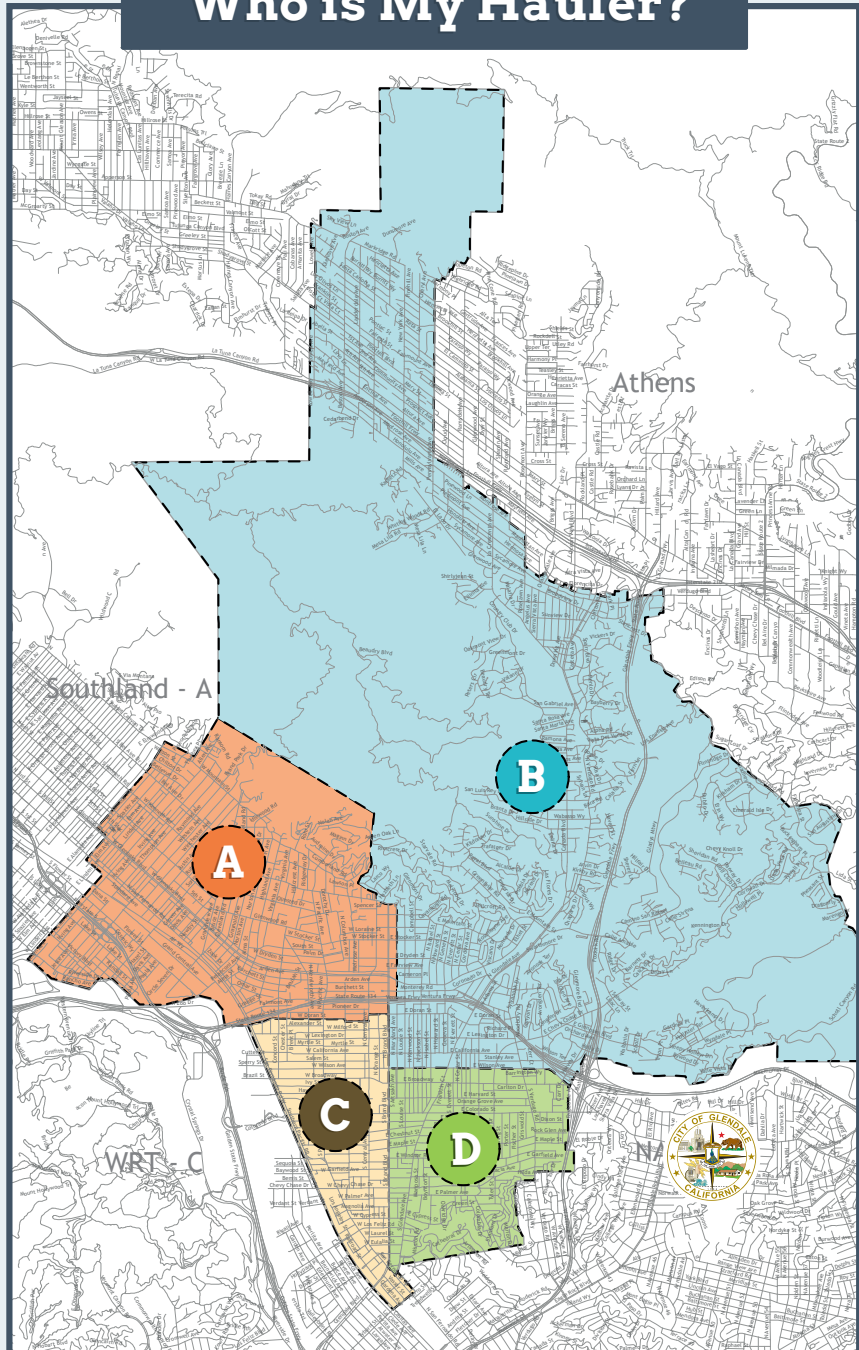
New Waste Hauling Services For:

Businesses and multi-family residences (five or more units)

Your new hauler was selected due to their operational history and specialized capabilities to effectively process organic waste.

All haulers have notified property and business owners about the details of the coming changes, and will continue to provide crucial information throughout the transition regarding collection guidelines, billing, and days of service.

Scan the QR code to view the map:



Southland Disposal Company
info@southlanddisposal.com
323-780-7150
www.southlanddisposal.com



Waste Resources
glendale@wasteresources.com
888-467-7600
www.wasteresources.com/Glendale



Athens Services
cs@athensservices.com
888-336-6100
www.athensservices.com/glendale



NASA Services, Inc.
customerservice@nasaservices.com
888-888-0388
www.nasaservices.com/municipalities/Glendale

ՕՐԵՆՔ Է...

ԹԱՓՈՆՆԵՐԻ ԵՎ ՎԵՐԱՄՇԱԿՄԱՆ ՆՈՐ ՊԱՀԱՆՁՆԵՐ

Գլենդեյլի ձեռնարկատիրությունների և 5 կամ ավել բնակարան ունեցող բազմաբնակարան շենքերի համար

ՆՈՐՈՒՅԹ. Օրգանական նյութերի վերամշակման ծրագիր

Նոր նահանգային օրենքը (Մենսոթի օրինագիծ 1383), որն ուժի մեջ է մտել 2022 թվականի հունվարի 1-ին, ձեռնարկատիրություններից և բնակիչներից պահանջում է աղբից առանձնացնել օրգանական թափոնները, ինչպես օրինակ սննդի մնացորդները և բույսերի թափոնները: Նոր օրենքին համապատասխանելու համար Գլենդեյլի քաղաքապետարանն աշխատում է իր արտոնագրված աղբահավաք ընկերությունների հետ՝ «Օրգանական նյութերի վերամշակման» նոր ծրագիրն իրականացնելու համար:

Նահանգի օրենսդրությունը և **Գլենդեյլի մունիցիպալ օրենսգրքի 8.44.082** կետը Գլենդեյլի ձեռնարկատիրություններից և բազմաբնակարան բնակելի սեփականություններից պահանջում է՝



Բաժանորդագրվել օրգանական նյութերի վերամշակման ծառայության համար ձեռնարկատիրության ընկերության հետ մինչև 2022թ. ապրիլի 1-ը: Հրաժարագրերը հասանելի են սահմանափակ տարածք կամ թափոնների փոքր ծավալ ունեցող ձեռնարկությունների համար և հասանելի են glendaleca.gov/waiver կայքում

- **Կապվեք անմիջապես ձեր արտոնագրված աղբահավաք ընկերության հետ, որպեսզի հաստատեք ծառայությունները, կամ պլանավորեք անվճար այցելություն՝ հասկանալու ձեր տարաների և ծառայության տարբերակները:**



Բնակիչների համար տրամադրեք աղբահավաքման երեք տարաններ, որոնք հստակ պիտակավորված են կամ գունավոր կոդավորված են (Կապույտ/Վերամշակում, Կանաչ/Օրգանական Սև/Աղբ) բոլոր փակ և բաց տարածքներում, որտեղ թափոնները հավաքվում են:

- **Այցելեք ձեր արտոնագրված աղբահավաք ընկերության կայքը՝ անվճար պիտակներ և պաստառներ ներբեռնելու համար:**



Ամեն տարի տեղեկատվություն տրամադրել աշխատակիցներին, վարձակալներին, կապալառուներին և հաճախորդներին այն մասին, թե յուրաքանչյուր տարայի մեջ ինչ նյութեր են: Նոր վարձակալներին պետք է տեղեկատվություն տրամադրվի տեղափոխվելուց առաջ կամ տեղափոխվելուց հետո 14 օրվա ընթացքում:

- **Այցելեք ձեր արտոնագրված աղբահավաք ընկերության վեբկայքը՝ այս պահանջը բավարարող անվճար կրթական նյութերից օգտվելու համար:**



Ապահովել ուսուցիչ սննդի վերամշակում (միայն սննդի թափոնների մեծ արտադրողների համար):

- **Լրացուցիչ տեղեկությունների համար այցելեք՝ glendaleca.gov/FoodRecovery**

Աղբահավաք ընկերության կոնտակտային տվյալները հասանելի են այստեղ՝ glendaleca.gov/hauler



Ծրագրի իրագործում

Այս պահանջներն ուժի մեջ են մտել 2022 թվականի հունվարի 1-ից: Քաղաքը ստուգում է կիրականացնի որոշելու համապատասխանությունը, ինչպես պահանջվում է նահանգի օրենսդրությամբ: Եթե քաղաքապետարանը հայտնաբերի անհամապատասխանությունը, ապա կտրամադրվեն ուսուսմանական նյութեր, ինչպես նաև համապատասխանության մասին ծանուցում: Խախտումները կարող են ենթարկվել վարչական քաղաքացիական տույժերի: Լրացուցիչ տեղեկությունների համար տե՛ս Գլենդեյլի քաղաքային օրենսգրքի 8.44.180:

Ո՞րն է իմ աղբահավաք ընկերությունը

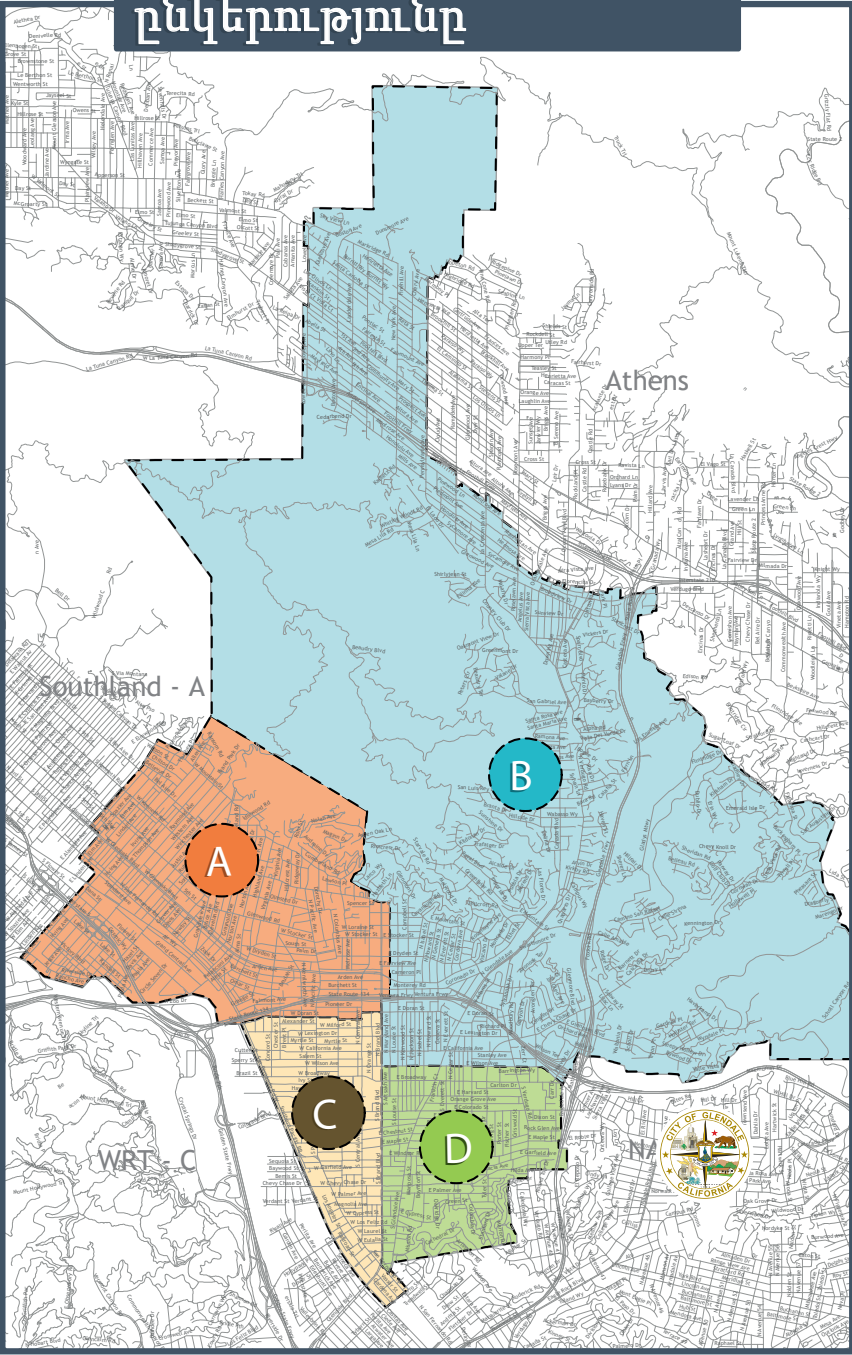
Թափոնների հավաքման նոր ծառայություններ

Ձեռնարկատիրությունների և բազմաբնակարան շենքերի համար (հինգ կամ ավել բնակարան)

Ձեր նոր աղբահավաք ընկերությունն ընտրվել է իր գործառնական պատմության և օրգանական թափոնների արդյունավետ մշակման մասնագիտացված հնարավորությունների շնորհիվ:

Բոլոր աղբահավաք ընկերությունները ծանուցել են գույքի և բիզնեսի սեփականատերերին գալիք փոփոխությունների մանրամասների մասին և կշարունակեն տրամադրել կարևոր տեղեկատվություն աղբահավաքման ուղեցույցների, վճարումների և ծառայության օրերի վերաբերյալ:

Քարտեզը դիտելու համար սկանավորեք QR կոդը.



Southland Disposal Company
info@southlanddisposal.com
 323-780-7150
www.southlanddisposal.com



Waste Resources
glendale@wasteresources.com
 888-467-7600
www.wasteresources.com/contact/



Athens Services
cs@athensservices.com
 888-336-6100
www.athensservices.com/glendale



NASA Services, Inc.
customerservice@nasaservices.com
 888-888-0388
www.nasaservices.com/municipalities/Glendale

ES LA LEY... NUEVOS REQUISITOS DE RESIDUOS Y RECICLAJE

Para empresas y propiedades multifamiliares de Glendale con 5 o más unidades

¡NUEVO! Programa de Reciclaje de Desechos Orgánicos

Una nueva ley estatal (Proyecto de Ley del Senado 1383), que entró en vigor el 1 de enero de 2022, requiere que las empresas y los residentes separen de la basura, los desechos orgánicos, como restos de comida y recortes de plantas. Para cumplir con la nueva ley, la Ciudad de Glendale está trabajando con sus transportistas autorizados para implementar un nuevo programa de Reciclaje de Orgánicos.

La ley estatal y el **Código Municipal de Glendale 8.44.082** requieren que las empresas y propiedades residenciales multifamiliares de Glendale:

1

Se suscriban al servicio de reciclaje de orgánicos con su transportista antes del 1 de abril de 2022. Las exenciones están disponibles para empresas con espacio limitado o bajos volúmenes de desechos y están disponibles en glendaleca.gov/waiver.

- › **Contacte directamente a su transportista franquiciado** para configurar los servicios o programar una visita gratuita a dicho lugar para comprender sus opciones de contenedores y servicios.

2

Proporcionar tres contenedores de recolección para residentes que estén claramente etiquetados o codificados por colores (Azul/Reciclaje, Verde/Orgánicos y Negro/Basura) en todas las áreas interiores y exteriores donde se recolectan los desechos.

- › **Visite el sitio web de su transportista franquiciado** para descargar etiquetas y carteles gratuitos.

3

Anualmente, brindar información a empleados, arrendatarios, contratistas y clientes sobre qué materiales pertenecen a cada contenedor. Los nuevos inquilinos deben recibir información antes o dentro de los 14 días posteriores a la mudanza.

- › **Visite el sitio web de su transportista franquiciado** para acceder a materiales educativos gratuitos que cumplan con este requisito.

4

Ofrecer valorización de alimentos comestibles (solo para grandes generadores de residuos alimentarios).

- › **Visite glendaleca.gov/FoodRecovery** para obtener más información.

La información de contacto del transportista está disponible en glendaleca.gov/hauler



Programa de Cumplimiento

Estos requisitos entraron en vigencia el 1 de enero de 2022. La ciudad realizará inspecciones para determinar el cumplimiento según lo exige la ley estatal. Si la ciudad determina el incumplimiento, se proporcionarán materiales educativos, así como un aviso a respetar. Las infracciones pueden estar sujetas a sanciones civiles administrativas. Para obtener más información, consulte el Código Municipal de Glendale 8.44.180.

¿Quién es mi transportista?

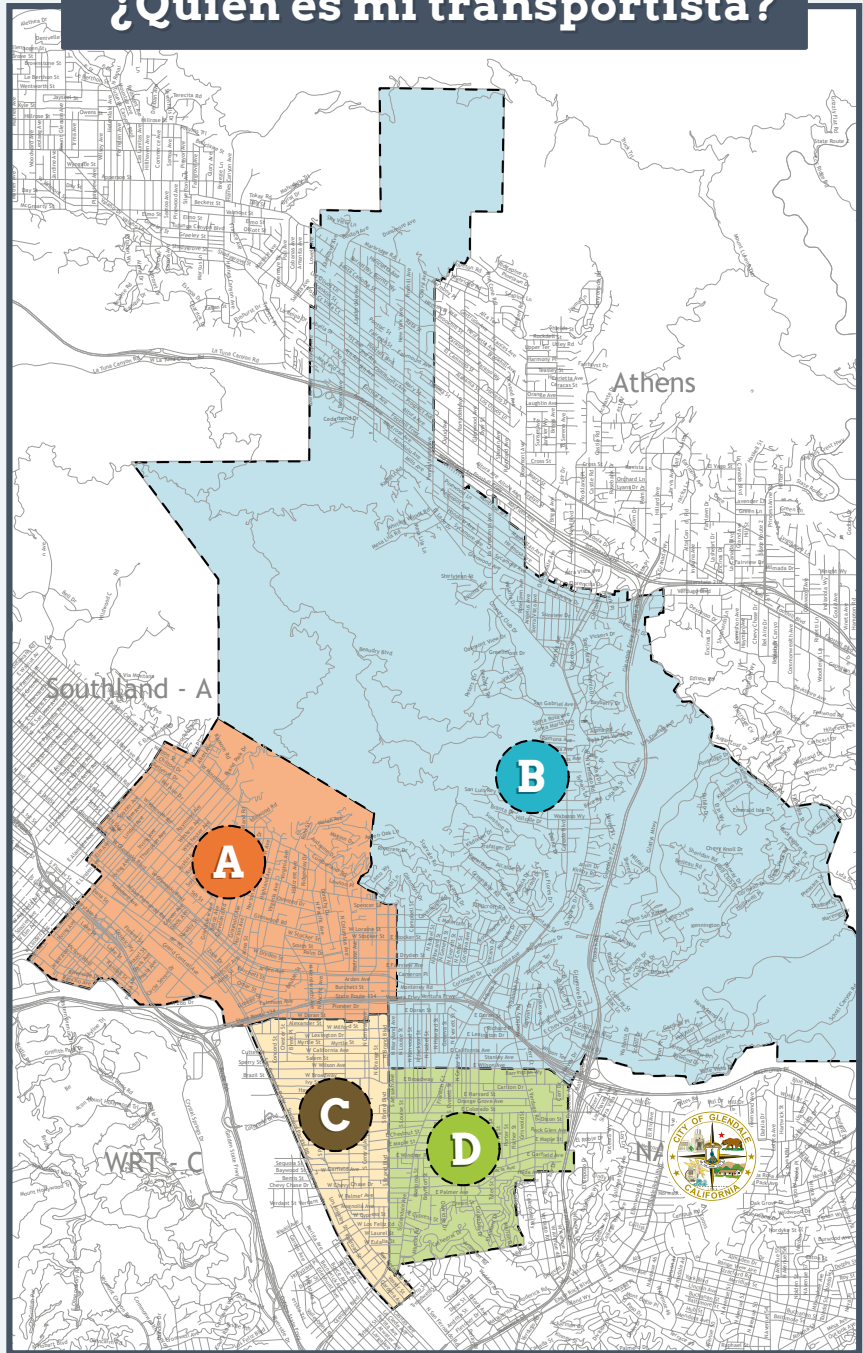
Nuevos servicios de transporte de desechos para:

Negocios y residencias multifamiliares (cinco o más unidades)

Su nuevo transportista fue seleccionado debido a su historial operativo y capacidades especializadas para procesar de manera efectiva los desechos orgánicos.

Todos los transportistas han notificado a los dueños de propiedades y negocios sobre los detalles de los próximos cambios y continuarán brindando información crucial durante la transición con respecto a las pautas de recolección, la facturación y los días de servicio.

Escanea el código QR para ver el mapa:



A

Southland Disposal Company
info@southlanddisposal.com
323-780-7150
www.southlanddisposal.com

C

Waste Resources
glendale@wasteresources.com
888-467-7600
www.wasteresources.com/contact/

B

Athens Services
cs@athensservices.com
888-336-6100
www.athensservices.com/glendale

D

NASA Services, Inc.
customerservice@nasaservices.com
888-888-0388
www.nasaservices.com/municipalities/Glendale



CITY OF GLENDALE, CALIFORNIA

Public Works
Administration

633 E. Broadway, Suite 209
Glendale, CA 91206-4310
Tel. (818) 548-3900 Fax (818) 546-2207
glendaleca.gov

NOTICE OF IMPLEMENTATION OF A WASTE HAULING FRANCHISE REQUIREMENT FOR THE SERVICING OF COMMERCIAL ACCOUNTS IN THE CITY OF GLENDALE

Dear City of Glendale Business/Property Owner:

This letter is to notify you that an exclusive franchise system for collection and hauling of solid waste for all commercial properties (including all businesses and multi-family buildings with five or more units) in the City of Glendale has been implemented citywide with an effective completion date to transition to the new franchise hauler by **December 1, 2021**.

This change follows an extensive planning period started in July 2013 in anticipation of State mandates that require recycling and organics diversion at all properties. Public outreach and community forums began to take place over the summer of 2017, and the commercial franchise system was discussed in a public forum by the Glendale City Council on five separate occasions between September - July 2021. On July 27, 2021, the Glendale Municipal Code (GMC Chapter 8.56) was amended to establish an exclusive franchise system for solid waste collection service of commercial establishments and multi-family residential properties. The exclusive franchise system will further sustainability goals, bring improvement to the environment by reducing solid waste traffic, emissions, and street impacts, and allow the City to meet additional mandates by the State of California related to recycling and organics diversion.

What does this mean for you? Refuse, recycling, and organics collection services for commercial properties will be provided by the franchise hauler that was assessed and selected by the City through a competitive process.

Your current hauler has been formally notified of this change, and should be cooperating with your new hauler to ensure a smooth transition between service providers.

You are in Franchise Zone A. Your new franchised hauler is Southland Disposal, and you are required to subscribe to service with them no later than November 30, 2021 with your new service beginning on December 1, 2021. Southland Disposal will be charging you rates limited to a maximum set by the City, and attached to this letter (See Attachment 1). New and expanded programs and services are included under this new franchise and rollout of these services will occur in the near future.

This hauler has been serving the City independently for many years and will take great pride in enhancing the quality of your collection services. As part of the new franchise agreement with the City, you are eligible to receive a free, on-site consultation to ensure the best possible level of service and assist your business/property to comply with recently-enacted State mandates to reduce waste and increase sustainability efforts.

Recycling and organics service is required for all customers in Glendale, in accordance with the City's municipal code and State law. You may be able to reduce the size or frequency of your refuse service when you sign up for recycling and organics service; please work with your new hauler to ensure that you have enough service to properly sort your materials into the refuse, recycling, and organics containers and so that there is no overflow from your containers.

If you have any questions, please feel free to contact your new hauler directly through e-mail at info@southlanddisposal.com.



CITY OF GLENDALE, CALIFORNIA

Public Works
Administration

633 E. Broadway, Suite 209
Glendale, CA 91206-4310
Tel. (818) 548-3900 Fax (818) 546-2207
glendaleca.gov

February 1, 2022

Dear HOA/Property Owner/Manager,

We are contacting you today regarding important updates to the City's waste collection services. On December 1, 2021, waste collection services for Glendale's commercial properties were transitioned to four private ("franchised") haulers selected by the City. All commercial accounts have been transferred to the hauler for their designated zone, so no actions are needed from account holders at this time. The intent of this letter is simply to provide additional information regarding the reasons for the changes you are experiencing as a commercial account holder.

Why has the City made changes to waste collection services?

The introduction of California Senate Bill 1383, which requires that all residents and businesses in the State recycle organic waste, prompted the City's decision to transition all business and multifamily accounts of equal or greater than five units to private hauling companies. This transition to a franchised hauler system enabled the City to comply with increasingly complex and costly State mandates while controlling long-term costs to account holders and the City. For more information about this transition:

- Use [this interactive map](#) to find out who your hauler is.
- View our [Franchise Hauler FAQs](#) on our website
- Click [here](#) to learn about new organics recycling and bulky item collection requirements

Why are my rates changing?

The City's rates were last set by the City Council in 2010. Since 2010, the cost of managing the City's waste and recycling has increased significantly due to:

- Changes in State law that forced cities like Glendale to significantly expand recycling activities, modify city-run facilities and purchase new equipment.
- Sharp increases in free bulky item collection service requests from property owners. The volume of bulky and abandoned item pickups nearly tripled between 2013 and 2020.

The Glendale City Council worked hard in ensuring that the new rates are competitive compared to other cities in Los Angeles County; Glendale's rates rank 34th lowest (or the bottom 50%) when compared to rates throughout the County's 88 cities. To view the City-approved maximum rates for all four haulers, click [here](#).

What am I required to provide my tenants?

You must provide all tenants with information about how to sort their garbage, recycling, and organics service annually and upon new tenant move-in.

I have questions about my service. Who do I contact? While transition efforts have been underway for nearly eight years, the City recognizes that changes of this extent can be uncomfortable for many residents and business owners who are adapting to new schedules, new waste sorting requirements, and new costs. We hope that residents can be patient as we address the impact of these transitions, which are occurring citywide.

If you have questions or concerns about your collection services, contact your hauler directly using the hauler's contact information which is available on the [City's website](#). Your hauler will work with you to "right-size" your services and insure your compliance with state laws and City ordinance. To report unsatisfactory service, you can also contact the Public Works Integrated Waste Call Center at 818-548-3916 or email franchise@glendaleca.gov.

Exhibit 3 - Franchise Zone Map

